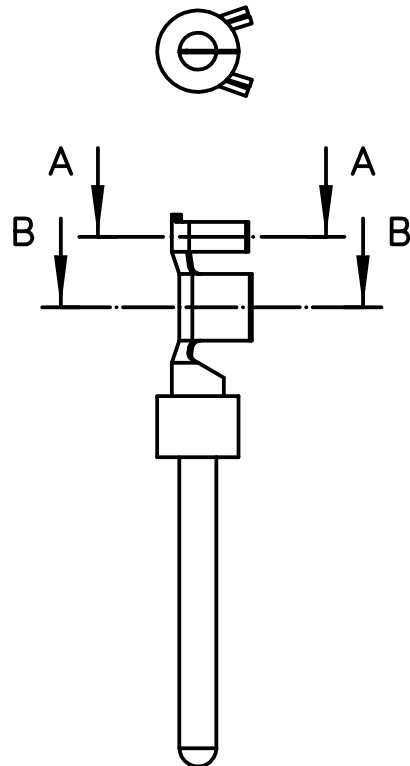
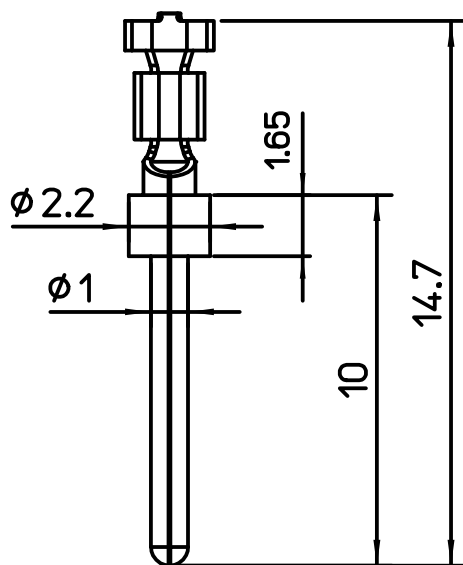
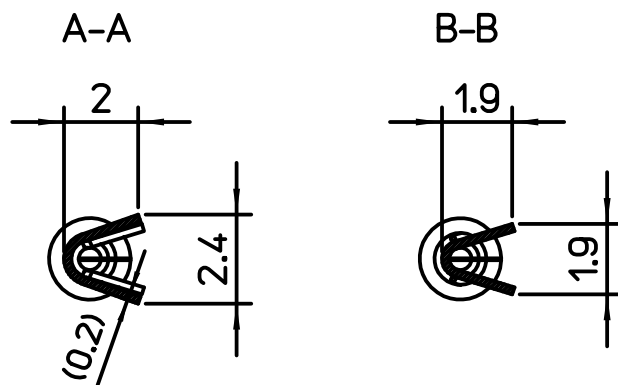


Diritti riservati

All rights reserved



ILME CODE	PERFORMANCE LEVEL
SIM1D 0.5	PL1
SIM2D 0.5	PL2
SIM3D 0.5	PL3

- Selective Gold plating over Nickel in the contact area, tin plating in the crimp area, ROHS conform
- Material: brass (leadfree)
- Single contact packaging

REV	DATA	FIRMA	
Simplified representation with dimensions without tolerance			
Original Size A4		SIMxD 0.5	
Date 29/10/19		Stamped male crimp contacts 5A 0.22-0.56mm ² , 20-24 AWG.	
Sign. Pitasi		Scale 5:1	